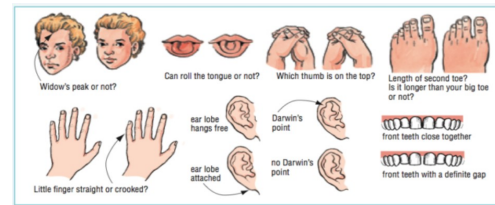
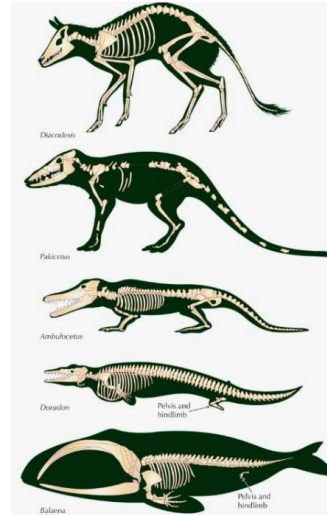


Science: Key Knowledge

- Animals and plants produce offspring that are similar but not identical to them. Offspring often look like their parents because their features are inherited.
- Variation means the differences you get between the same species, even plants.
- Adaptations are characteristics (features that are specific to a species) that are influenced by the environment.
- Fossils are the preserved remains of ancient animals and plants. Fossils let scientists know how plants and animals used to look millions of years ago, giving proof that things evolved over time.
- Evolution is the gradual process by which living things have developed from earlier forms over millions of years.

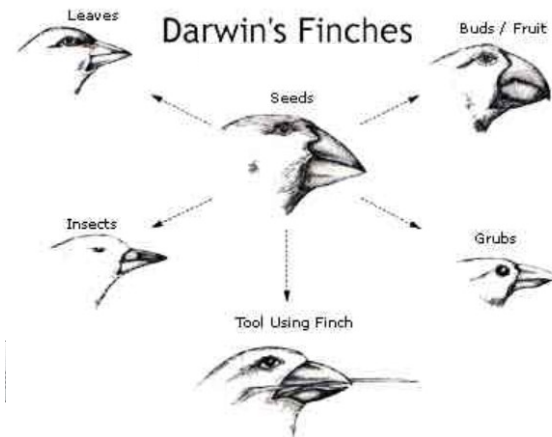


Vocabulary

- | | |
|-----------------|------------------|
| offspring | evolution |
| inheritance | natural |
| variations | selection |
| characteristics | fossil |
| adaptation | adaptive traits |
| habitat | inherited traits |
| environment | fossilisation |
| Mary Anning | |

History: Key Knowledge

- Charles Darwin was born in 1809 and died in 1882.
- He is a significant historical figure because he put forward a theory of evolution by natural selection.
- Darwin went on a famous sea voyage, in 1831, on a ship called HMS Beagle. He visited many places around the world and collected animal and plant samples.
- When looking at the sample, Darwin noted similarities and differences in characteristics between animals of the same species, leading him to develop his theory of evolution.



Vocabulary

- | | |
|----------------|------------|
| Charles Darwin | chronology |
| theory | evidence |
| voyage | ancestry |
| finch | naturalist |
| finches | Galápagos |
| sample | islands |
| species | naturalist |

Geography: Key Knowledge

- ◆ Charles Darwin visited the Galápagos islands on his five-year voyage and this was where he famously discovered the finches who led him to his theory of evolution.
- ◆ The Galápagos islands are volcanic lands, located over 1000km away from the South American continent., off the Ecuadorian coastline.
- ◆ They consist of 61 islands and islets with 13 main islands.

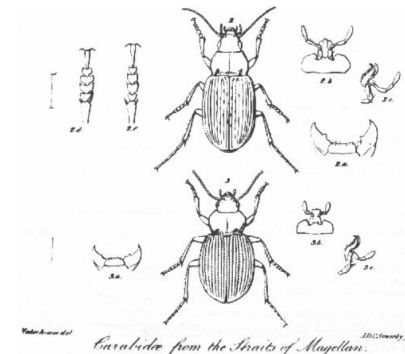


Vocabulary

Galápagos	America
islands	islets
volcanic	equator
Ecuador	latitude
South	longitude

Art: Key Knowledge

- ◆ Cameras were developing when Darwin embarked on his voyage. Therefore, he couldn't take photographs and instead sketched the samples he found.
- ◆ Sketching skills develop when we can choose which grade of pencil to use to create certain effects, such as feathers and fur.



Vocabulary

sketching	scumbling
grade	stippling
detail	patterning
herring-bone	contour hatching

