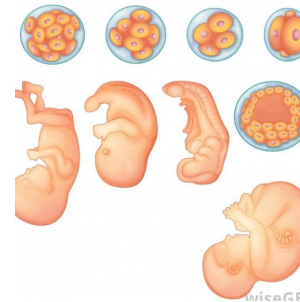


Science: Animals, including humans

- ◆ When humans develop into old age, they go through many changes.
- ◆ The gestation period is the development during the carrying of an embryo or foetus inside most mammals and some non-mammals.
- ◆ Animals and humans have different gestation periods, humans have 9 months, and animals' gestation periods range from a number of weeks to years.
- ◆ A mouse has a gestation period of only 21 days, whereas an elephant has a gestation period of 645 days—wow!

Human and elephant gestation:



Vocabulary

gestation	nervous system
life cycle	organs
humans	baby
animals	mother
changes	growing
growth	birth
foetus	womb
mammals	fertilisation

Geography: Human and Physical Geography

- ◆ You can locate the world's countries using maps.
- ◆ Human geography is the study of human interaction with the Earth and the environment.
- ◆ A key aspect of human geography is settlement and land use.
- ◆ Physical geography is the study of naturally occurring changes and the physical features of the Earth.
- ◆ Humans have both improved and damaged the environment and these characteristics can affect the lives and activities of the people living there—we see this with the Black Death.

Physical Geography



Human Geography



Vocabulary

global	routes
spread	human
proximity	physical
Europe	impact
source country	environment
trade	analyse
transport	population

## Design Technology: Cooking and Nutrition

- ◆ We will prepare and cook a medieval dish—in this case...gingerbread!
- ◆ In medieval ages, gingerbread was popular and very much a luxury.
- ◆ Medieval food could be quite bland so a sweet treat with spicy taste was unique for its time.
- ◆ Medieval spices were very expensive as they had to be imported from Asia and Africa—ginger and cinnamon were imported by the wealthy!

## Gingerbread



## Ginger and Cinnamon



## Vocabulary

design	gingerbread
appropriate	medieval
cook	luxury
evaluate	taste
critical	evaluate
popular	wealthy

## History: Chronological awareness

- ◆ In the history of Europe, the Middle Ages or Medieval Period lasted from the 5th to the 15th century.
- ◆ The Black Death was a devastating global epidemic or bubonic plague that struck Europe and Asia in the mid-1300s.
- ◆ The Black Death spread quickly, from Asia in the 1330s, to as far north as Russia in 1351.
- ◆ Knights were important in the historical battles and wars of the 13th century.



Black Death



Knights

## Vocabulary

Middle Ages	chivalry
Black Death	epidemic
13th Century	bubonic
Artefacts	plague
knights	chronology

### Where Is Eyam?


Eyam (pronounced 'eem') is a village in the Peak District National Park. The Peak District is mostly in the county of Derbyshire. Eyam has a population of around 1000 people.

In 1665, the village was devastated by an outbreak of the plague.

What county do you live in?

Eyam

Talk About It



Summer 1665  
The plague breaks out in London..

September to December 1665  
42 villagers die from the plague.

26<sup>th</sup> June 1666  
William Mompesson says the village should be quarantined.

1<sup>st</sup> November 1666  
Eyam becomes free of the plague. 260 villagers have died.

End of Summer 1665  
Cloth ordered by George Viccars arrives in Eyam. The cloth contains fleas which carry the plague.

Spring 1666  
With more people dying, villagers decide to leave Eyam.

July to November 1666  
The village is cut-off from the outside. Villagers continue to die.

1669  
William Mompesson leaves Eyam.

